

# NCMRWF

## Monthly Data Monitoring Report September-2024



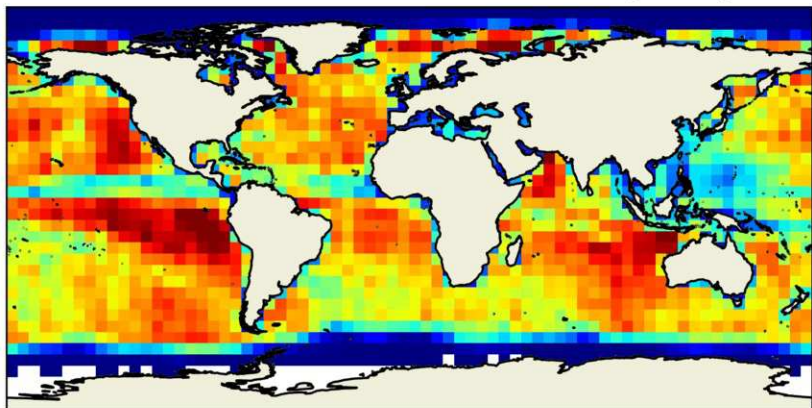
based on daily data(5x5)degree

**NATIONAL CENTRE FOR MEDIUM RANGE WEATHER FORECASTING**  
**Ministry of Earth Sciences**  
**A-50, Sector-62**  
**NOIDA, UP, Pin: 201 309**

# Satellite-derived SST Observations (5°x5°)



60°N  
30°N  
0°  
30°S  
60°S



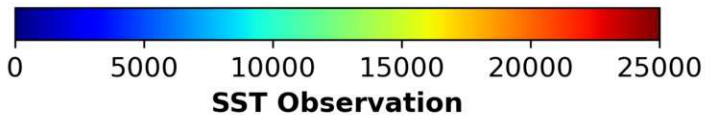
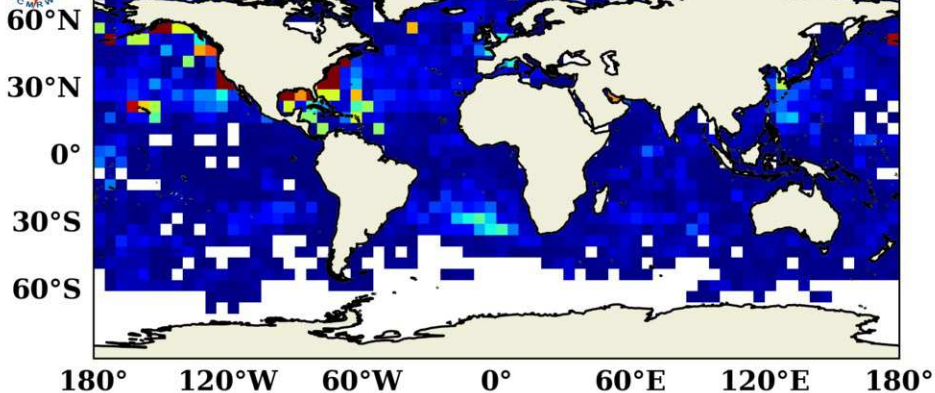
180° 120°W 60°W 0° 60°E 120°E 180°



0 20000 40000 60000 80000 100000 120000

**SST Observation**

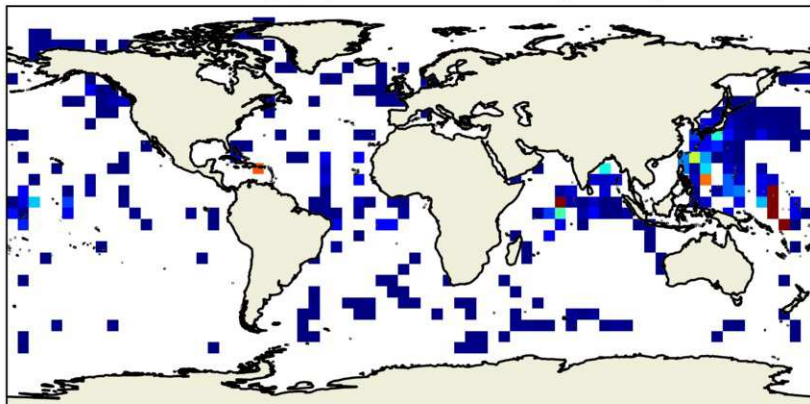
# Surface SST Observations (5°x5°)



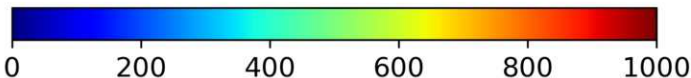
# Profile (T/S) Observations (5°x5°)



60°N  
30°N  
0°  
30°S  
60°S

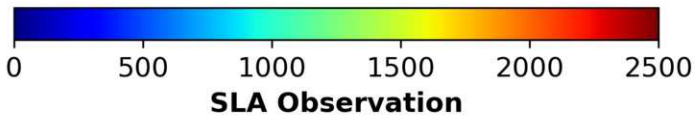
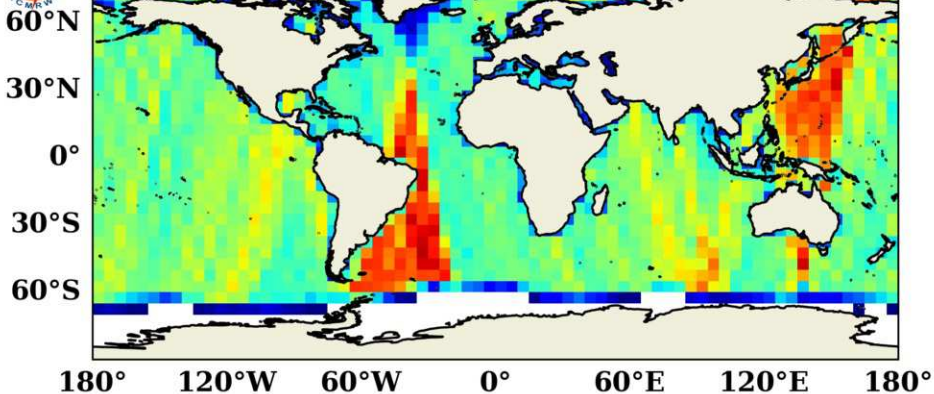


180° 120°W 60°W 0° 60°E 120°E 180°



T/S profile Observation

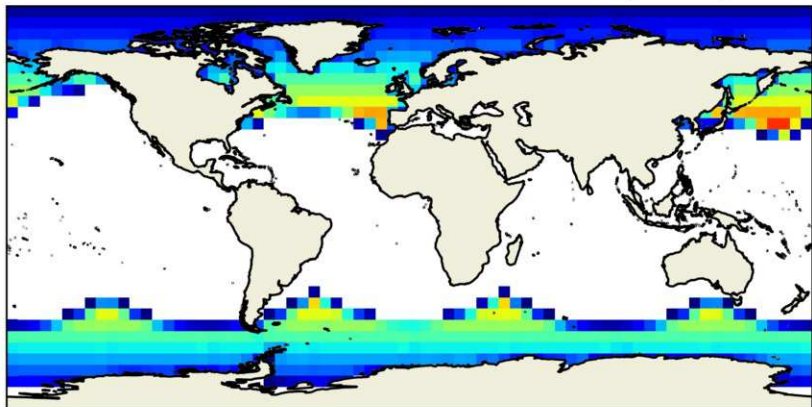
# Satellite-derived SLA Observations ( $5^\circ \times 5^\circ$ )



# Satellite-derived SIC Observations (5°x5°)



60°N  
30°N  
0°  
30°S  
60°S



180° 120°W 60°W 0° 60°E 120°E 180°

